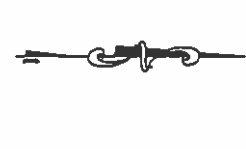


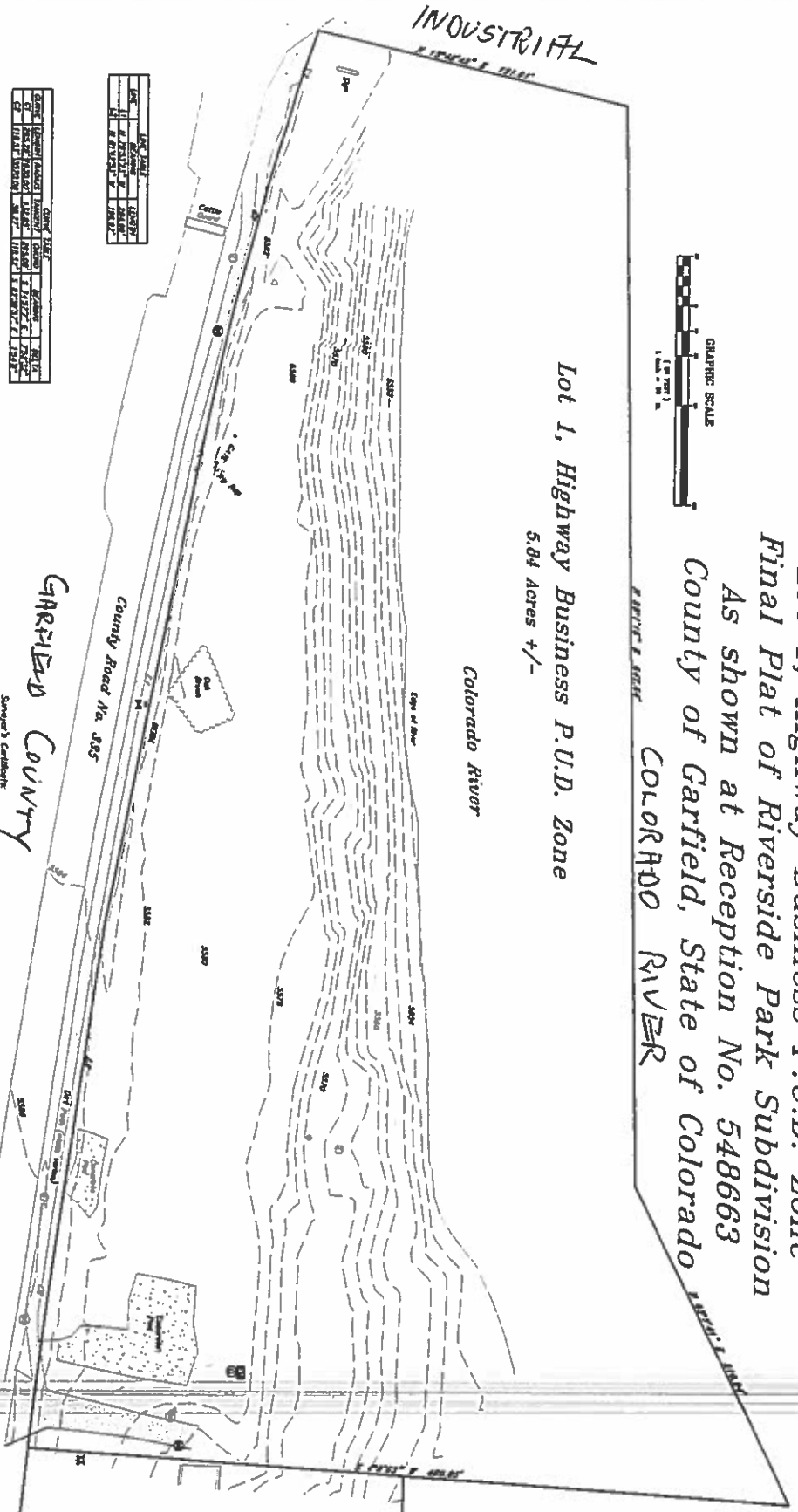
TOPOGRAPHICAL SURVEY MAP
Lot 1, Highway Business P.U.D. Zone
Final Plat of Riverside Park Subdivision
As shown at Reception Park No. 548663
County of Garfield, State of Colorado
COLORADO RIVER

Lot 1, Highway Business P.U.D. Zone
5.04 Acres +/-



OPEN SPACE

- Legend**
- - Existing Improvement
 - - Public Right-of-Way
 - ▭ - Utility Marker
 - - Sewer Manhole
 - - Water Manhole
 - - Storm Manhole
 - - Elevation Marker
 - - Survey Boundary
 - - Survey Station
 - - Survey Point
 - - Survey Marker
 - - Survey Control
 - - Survey Benchmark
 - - Survey Monument
 - - Survey Monument
 - - Survey Monument



DATE	BY	REVISION
05/19/2013	J. W. [Name]	Final Plat
05/19/2013	J. W. [Name]	Final Plat
05/19/2013	J. W. [Name]	Final Plat

LEGEND AND NOTES

- All boundary markers shown hereafter as required.
- DATE OF SURVEY: MAY 2013
- DATE OF RECONSTRUCTION: AS SHOWN ON PLAN
- PLANNING AND DESIGN UNDER A PROFESSIONAL ENGINEER'S SUPERVISION AND CONTROL.
- THE SURVEY WAS NOT CONDUCTED BY THE SURVEYOR TO DETERMINE CONFORMANCE OF THE RECONSTRUCTION OF THE SURVEY WITH THE ORIGINAL SURVEY.
- THE SURVEYOR HAS NOT CONDUCTED A RE-SURVEY OF THE SURVEY TO DETERMINE CONFORMANCE OF THE RECONSTRUCTION OF THE SURVEY WITH THE ORIGINAL SURVEY.

Surveyor's Certificate

I, JEFFREY ALLEN RITTEL, being a Registered Land Surveyor in the State of Colorado, do hereby certify that this map of the Final Plat of Riverside Park Subdivision, as shown at Reception Park No. 548663, was prepared by me and under my supervision on May 18, 2013, and that I am the Surveyor and map on this day presents in the best of my knowledge and belief.

JEFFREY ALLEN RITTEL, LS 33333 DATE: _____

Map Note: This topographical map complies with National Map Accuracy Standards. Contour lines are shown at 10-foot intervals. Spot elevations are shown at 1/2" intervals. All points shown on this map were surveyed by the Surveyor or under his direct supervision. All points shown on this map were surveyed by the Surveyor or under his direct supervision. All points shown on this map were surveyed by the Surveyor or under his direct supervision.

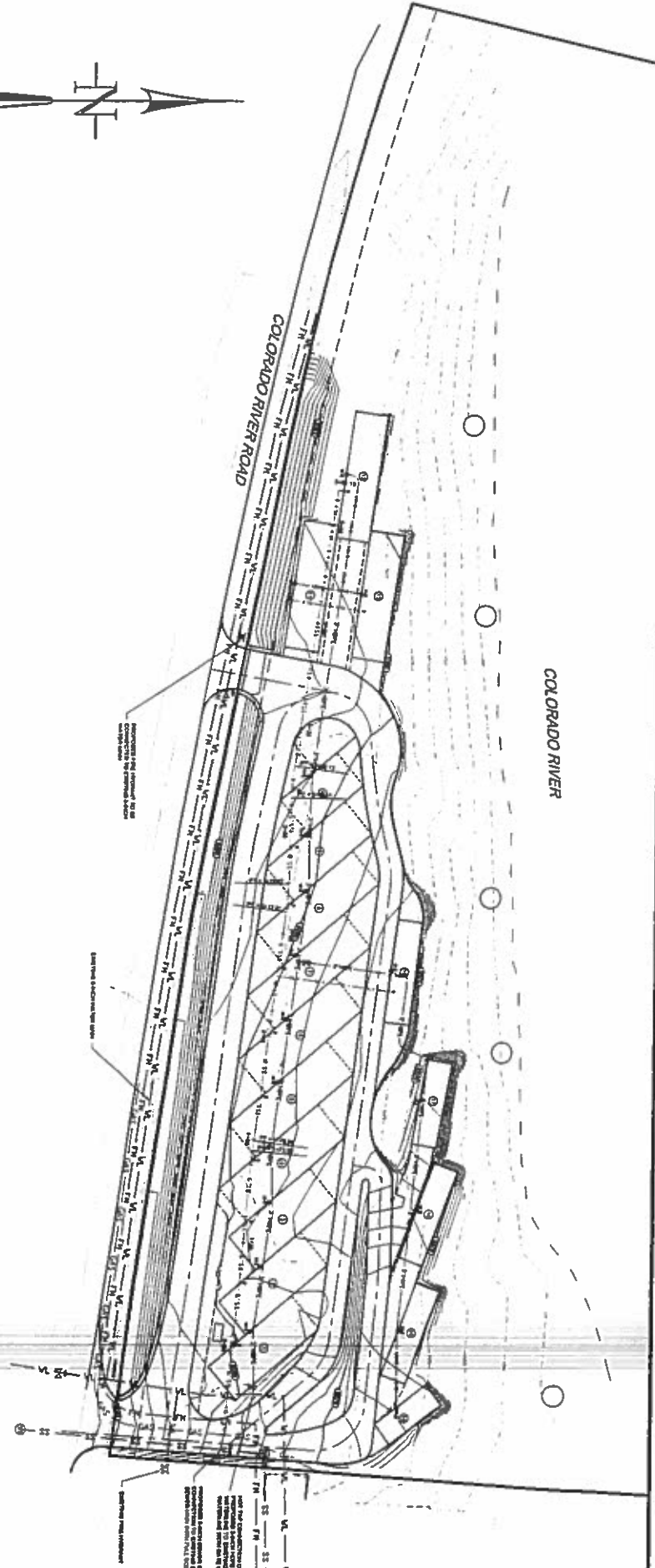
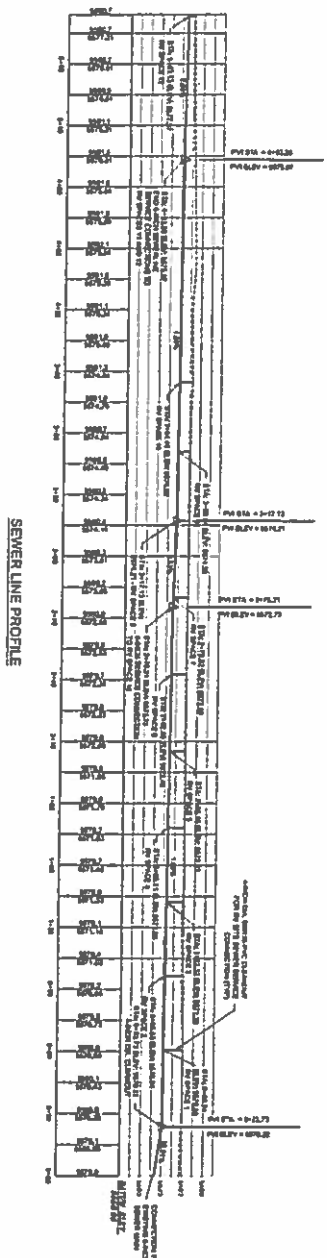
JEFFREY ALLEN RITTEL SURVEYING SERVICES
 227 Balsa Avenue
 Colorado Springs, Colorado 81601
 (719) 528-9708 (Fax 719-528-9007)
 JAR@jeffreyallenrittel.com



TOPOGRAPHICAL SURVEY MAP

TBD County Road 335
New Castle, Colorado

Map No. PUC
 Date: 05/19/2013
 1 of 1



REV	DATE	REVISION	MADE BY	CHECK BY	APPROVED BY

PRELIMINARY UTILITY PLAN

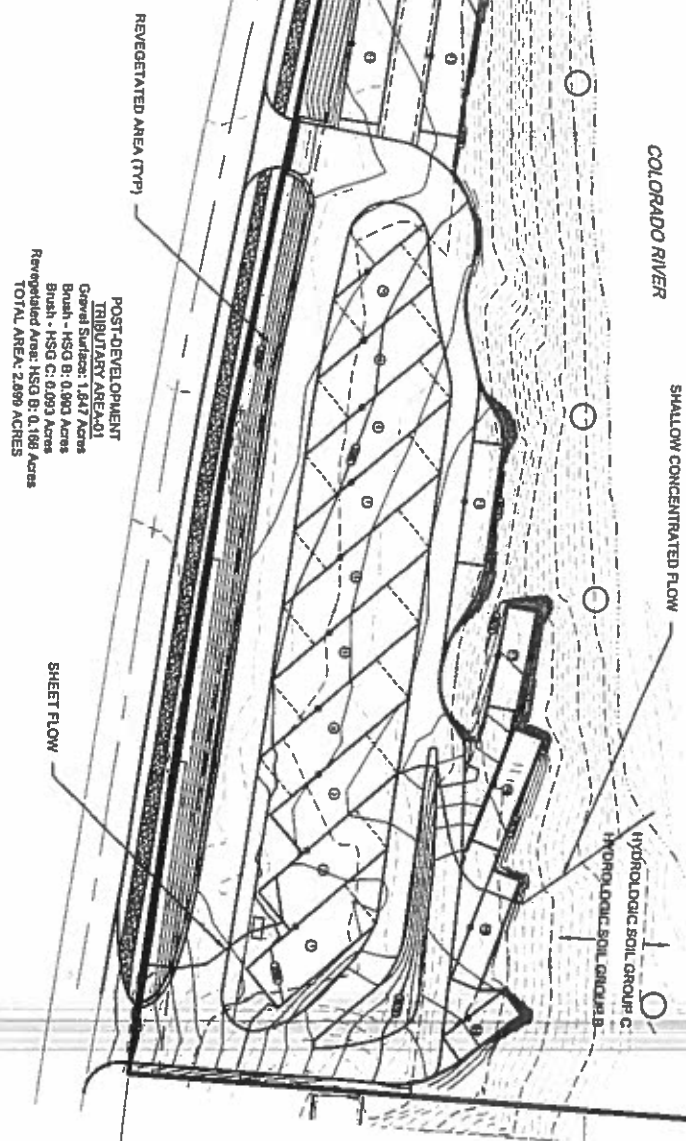
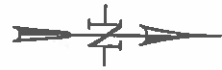
SCALE: 6"=60' DATE: MAY 18, 2010 DRAWN BY: SJB
 SHEET: 1403 PROJECT: M54 CADD BY: SJB
 DRAWING: In Rev: 01/20/10 SJB
 DIRECTORY: RIVERSIDE.RVP



RIVERSIDE RV PARK
Rob Chatmas

GAMBA & ASSOCIATES, INC.
CONSULTING ENGINEERS & LAND SURVEYORS
870848-6888 WWW.GAMBAENGINEERING.COM
710 NORTH 97th STREET, SUITE 100, OMAHA, NE 68114

SHEET NO. **3**



POST-DEVELOPMENT TRIBUTARY AREA 01
 Gravel Surface: 1.847 Acres
 Brush - HSG B: 0.093 Acres
 Brush - HSG C: 0.093 Acres
 Revegetated Area: HSG B: 0.168 Acres
 TOTAL AREA: 2.899 ACRES

STORMWATER ANALYSIS POST-DEVELOPMENT CONDITIONS			
SCALE: 1" = 60'	DATE: AUGUST 3, 2015	DRAWN BY: MUG	
SHEET: 2 OF 2	PROJECT: 141116	CHKD BY:	
DRAWING: Drainage Plan - 20150803-104.dwg DIRECTOR: MURPHY141116@shelco.com			



RIVERSIDE RV PARK
 Rob Chatmas

GAMBA & ASSOCIATES, INC.
 CONSULTING ENGINEERS & LAND SURVEYORS
 5700 W. 82ND
 WWW.GAMBAENGINEERING.COM
 100 NORTH ST., 27th FLOOR, Suite 1000, Olathe, KS 66061

SHEET NO.
2

