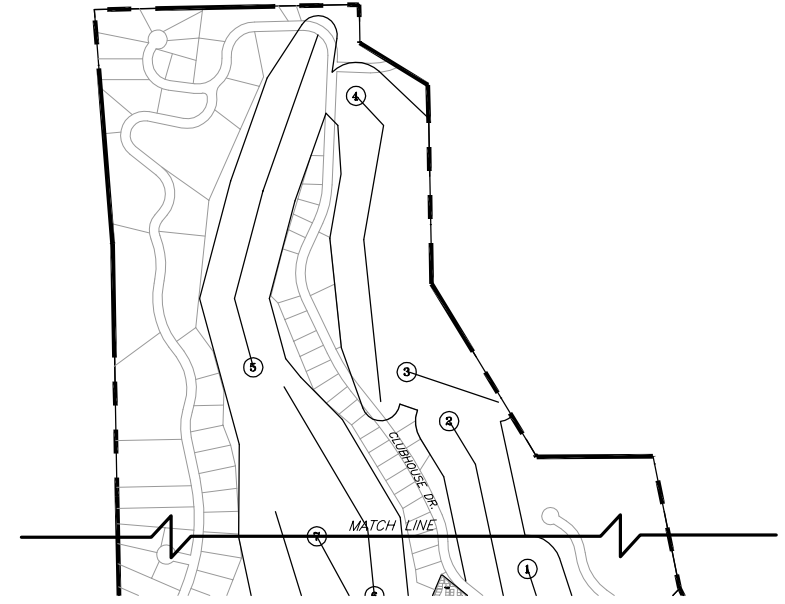
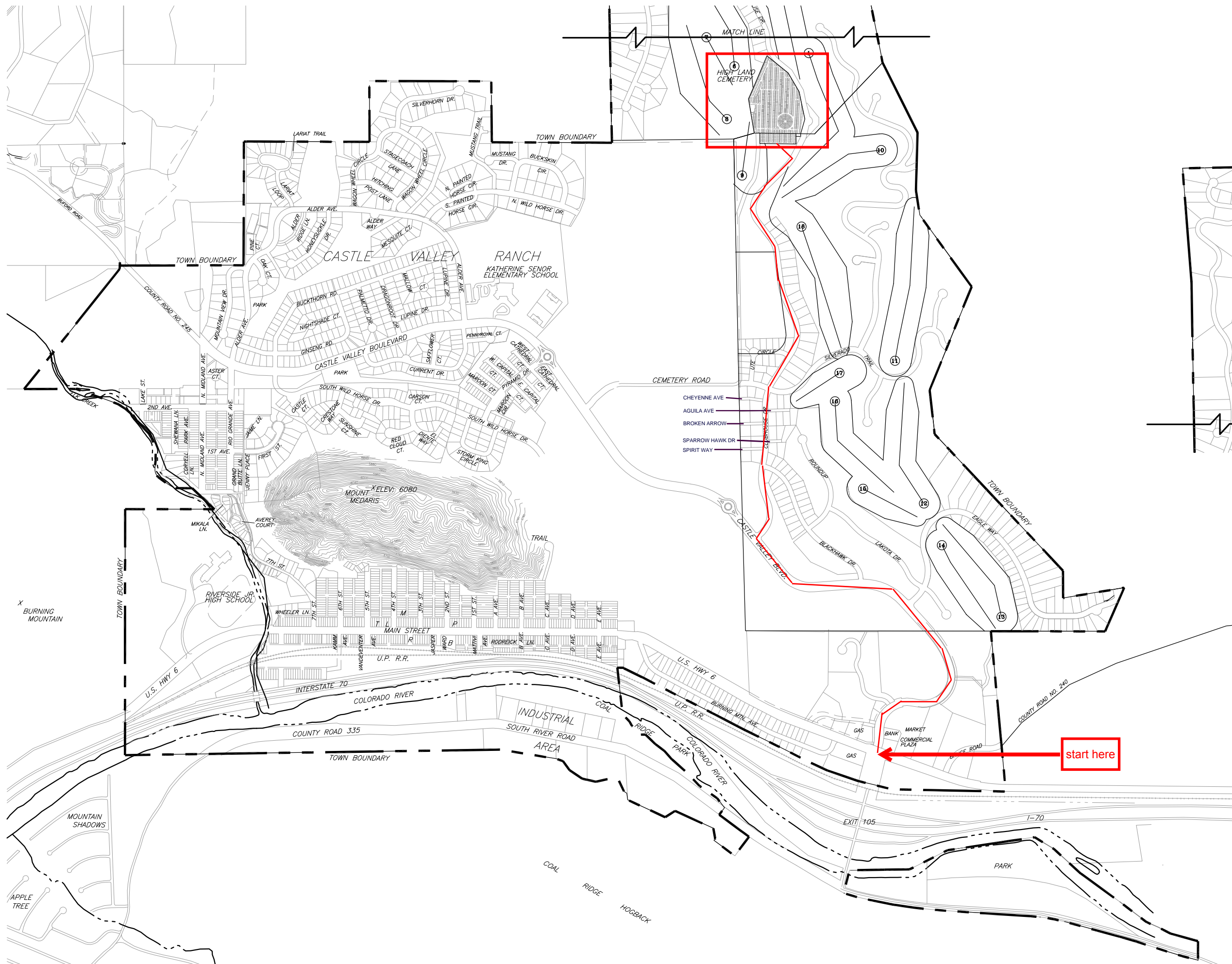
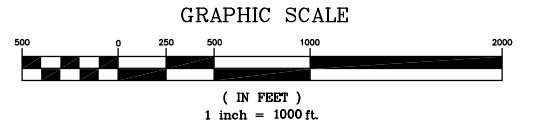


STREET LOCATION MAP
 TOWN OF NEW CASTLE, COLO. 2001
 INCORPORATED: 1888



ELEVATION: 5,556 FEET ABOVE SEA LEVEL



LEGEND

- T: TOWN HALL 5,556 FT. ELEVATION
- L: LIBRARY
- M: MUSEUM
- P: U.S. POST OFFICE
- B: BURNING MOUNTAIN PARK
- R: RITTER PLAZA

FROM THE OFFICE OF THE TOWN CLERK
 P.O. BOX 90
 NEW CASTLE, CO 81647

(970) 984-2311

