



© 2024 Zehren and Associates, Inc.

Address:
48 E BEAVER CREEK BLVD, SUITE 303
AVON, CO 81620

Phone:
(970) 949-0257

GATEWAY ROUNDABOUT PUBLIC OPEN HOUSE

June 11th, 2024



LEGEND

-  Ornamental Trees
-  Ornamental Grasses
-  Coniferous Shrubs
-  Deciduous Shrubs
-  Perennial Plant Beds (> 30" Ht.)
-  Street Light Locations
-  Proposed Gravel Mulch
-  Paved Median Areas (Stamped Colored Concrete)
-  Proposed Center Roundabout Sculpture
-  Gabion Lantern Entry Monuments
-  Statue



Aerial View of The Grand Hogback, and The "Gap" Through it Created by the Colorado River near New Castle.

Context

- The Town of New Castle is located near a unique geological formation called a monocline, also known as the Grand Hogback.
- The Grand Hogback is a massive ridge of varying inclined rock layers that consist of sandstone, shale, and coal. This unique geology is what forms the varying colors on the cliffs high above New Castle.
- The Colorado River cuts through the Grand Hogback at New Castle and forms a "Gap" in the Hogback.
- The presence of coal in this land form has helped shape the history of the town.

History

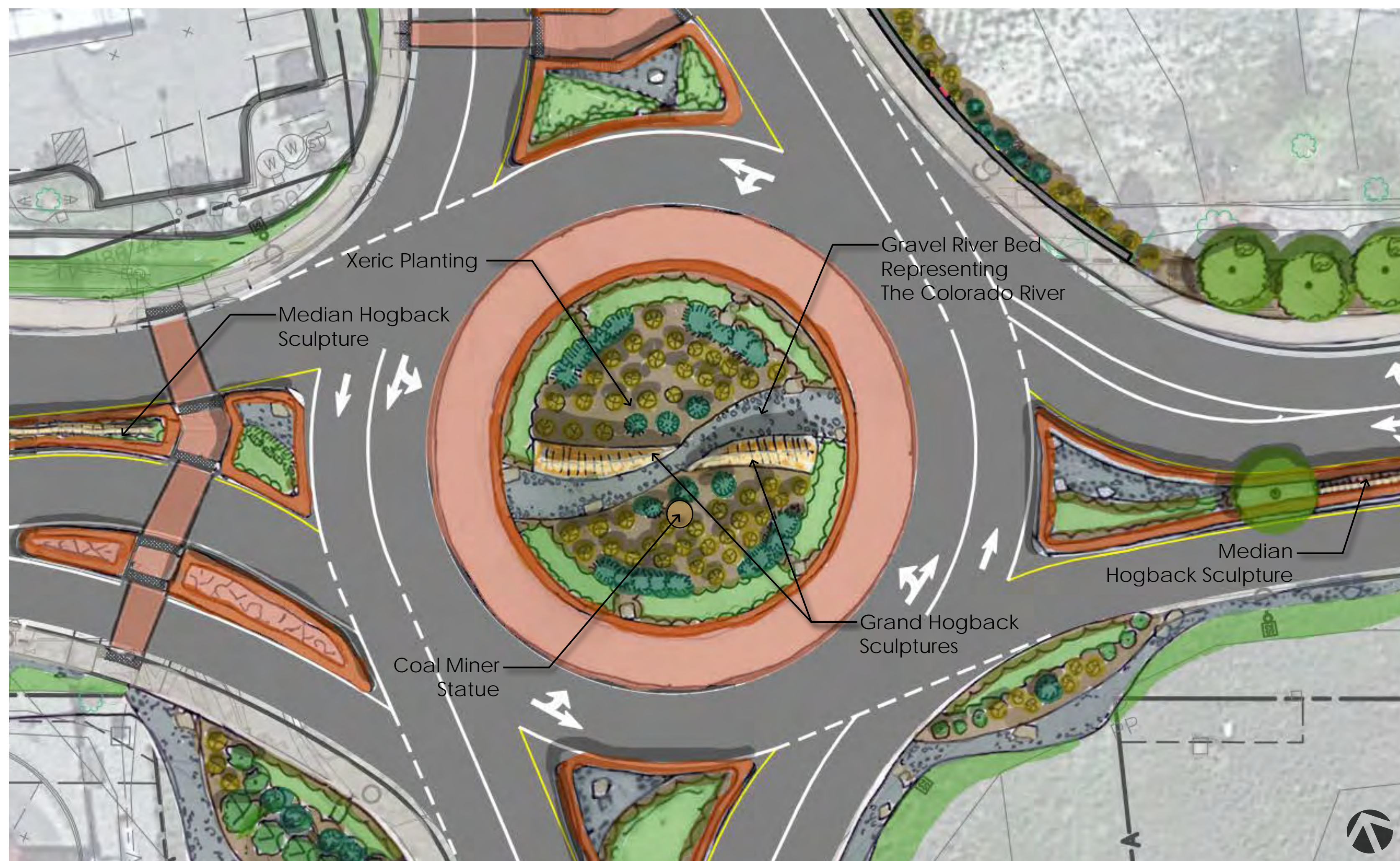
- The Town of New Castle began as a homestead in 1882 by Jasper Ward.
- The coal mining boom of the 1880's brought many new settlers to the area as New Castle became known for its high quality and soft coal.
- The railroad also played an important role in the development of the town as a means to transport coal to smelters in the Roaring Fork Valley.
- The Vulcan Mine was one of the larger coal mines and was located just south of the river from New Castle. The Vulcan mine was struck by two serious explosions that killed 86 men.
- Modern day New Castle has grown to a population of nearly 5,000 residents and has retained many of the historic downtown buildings.

Design Concept

- The core concept of the design is based on the prominent geological feature of The Grand Hogback. This feature is located due south of New Castle and extends approximately 90 miles from East to West across western Colorado.
- The Hogback feature is represented in the design of the roundabout and medians by a creating a long linear sculptural that meanders from East to West to create a unifying element in the landscape design.
- The linear sculpture is intended to represent the serrated ridge line of the Grand Hogback, with the center piece of the sculpture being located in the middle of the roundabout.
- The break in the Hogback sculpture at center of the roundabout is intended to portray the "Gap" where the Colorado River cuts through the Hogback. The river is graphically represented by decorative gravel meandering through the stone Hogback Sculptures.
- The coal mining history of New Castle is also honored in the design by placing a statue of a coal miner holding a lantern at the center of the roundabout.
- The Gabion Lantern entry structures have also been designed to reflect a mining aesthetic and utilize historic lantern style light fixtures.



Birds Eye View of the Grand Hogback



Roundabout Enlargement Plan



View of Burning Mountain West of New Castle



1. View to north along the West side of Castle Valley Boulevard.



2. View of the intersection facing South.



3. View of the site facing East along the north sidewalk.



4. View of Hwy 6 facing West towards downtown New Castle.



5. View to the West along the South side of Hwy 6.



6. View facing North towards Kum & Go at the Southwest corner of the intersection.



7. View of existing pedestrian path facing South towards the pedestrian bridge.



8. View of pedestrian path facing North towards the intersection.



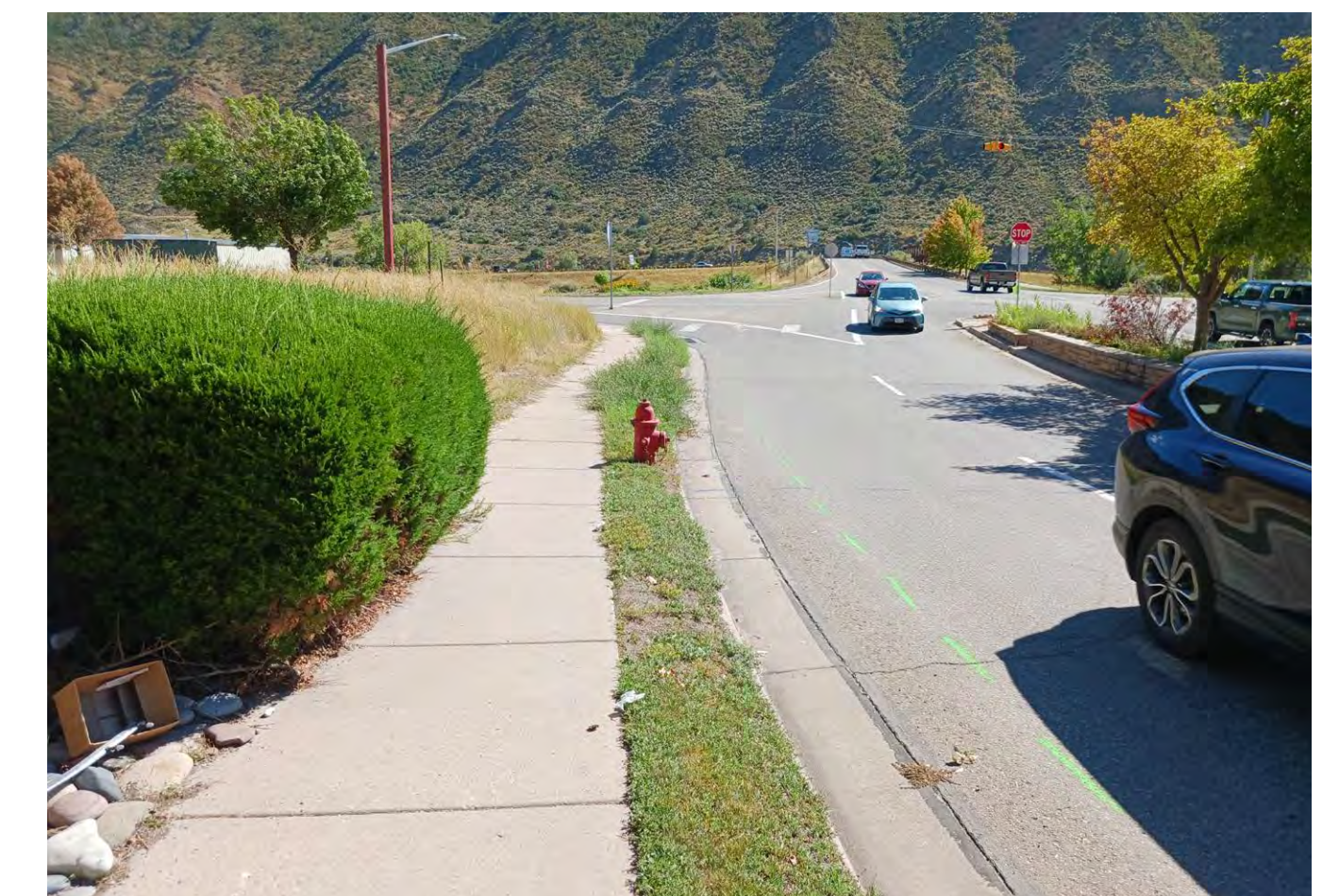
9. View to the north along the East side of Castle Valley Boulevard.



10. View to the North at existing intersection.



11. View to the West along the North side of Hwy. 6.



12. View to the South towards the intersection. Proposed retaining wall location along East side of the sidewalk.



Roundabout precedent with decorative river cobbles and xeric planting.



Flagstone slab structure and planting precedent.



Gabion structure precedent



Rocky Mountain Juniper



Crabapple Spring Snow



Roundabout precedent with Crabapple trees, Feather Reed Grass, and Red Yarrow.



Varied decorative gravel



Xeric Planting



Pinyon Pine



Red Twig Dogwood



Dwarf Blue Rabbit brush



Feather Reed Grass



Russian Sage



Red Yarrow

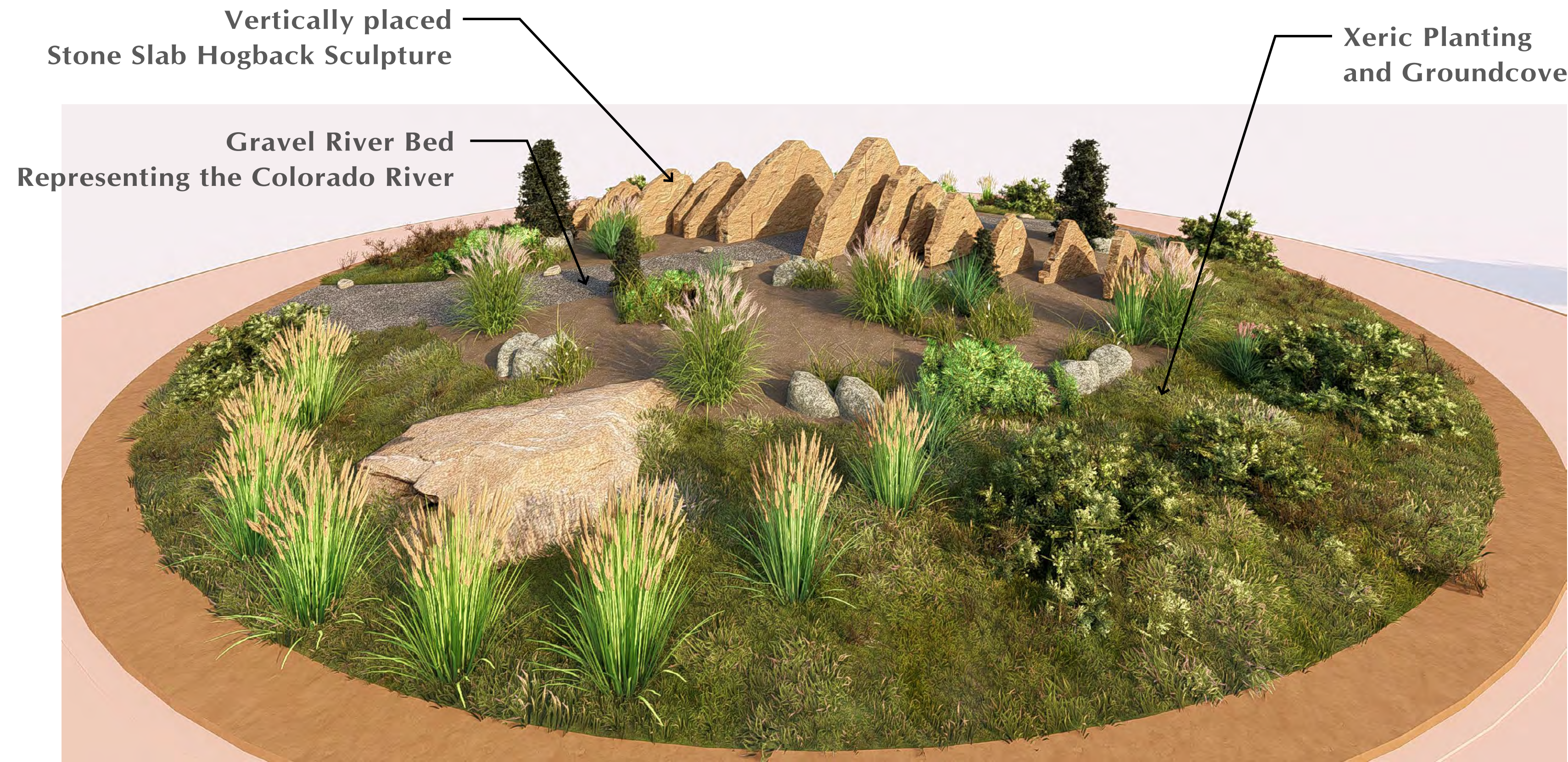


Soapweed Yucca



Silvermound Sage

Grand Hogback Roundabout Sculpture

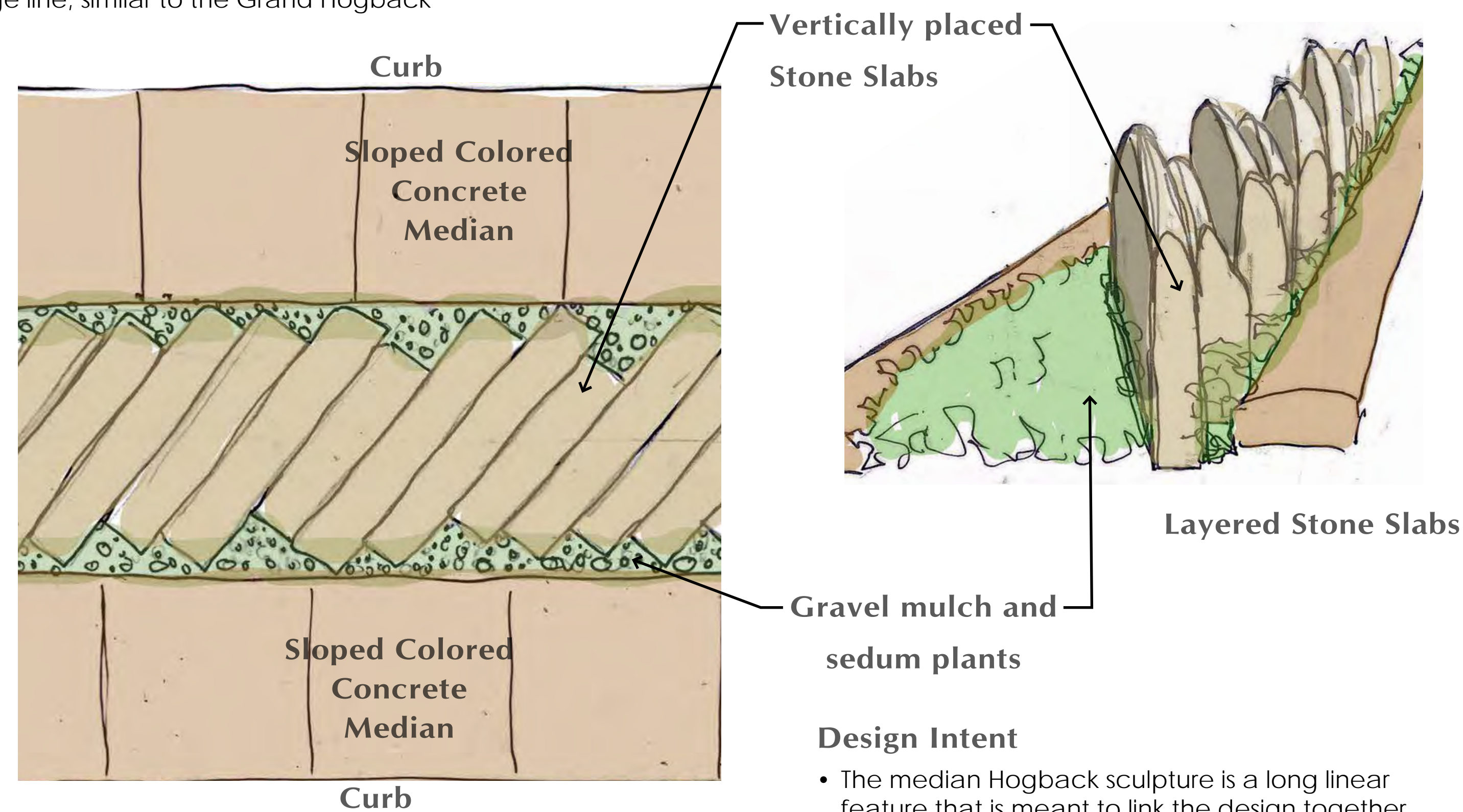


Design Intent

- A series of triangular shaped sandstone slabs are placed vertically along the East / West axis of the roundabout to form a ridge line and represent a likeness of the Grand Hogback.
- The stone slabs would be set at an angle to create visual interest and movement when viewed from the travel lanes and roundabout entrances.
- The stone slabs gradually become taller toward the center of the roundabout to create a high point.
- Decorative gravel and river cobble will meander between the two tallest slabs at the center of the roundabout as a symbolic representation of the Colorado River flowing through the "Gap" in the Grand Hogback at New Castle.

Stone Slab Median Hogback Sculpture

- This concept utilizes varying sizes of sandstone slabs, placed vertically to form the shape of a serrated ridge line, similar to the Grand Hogback

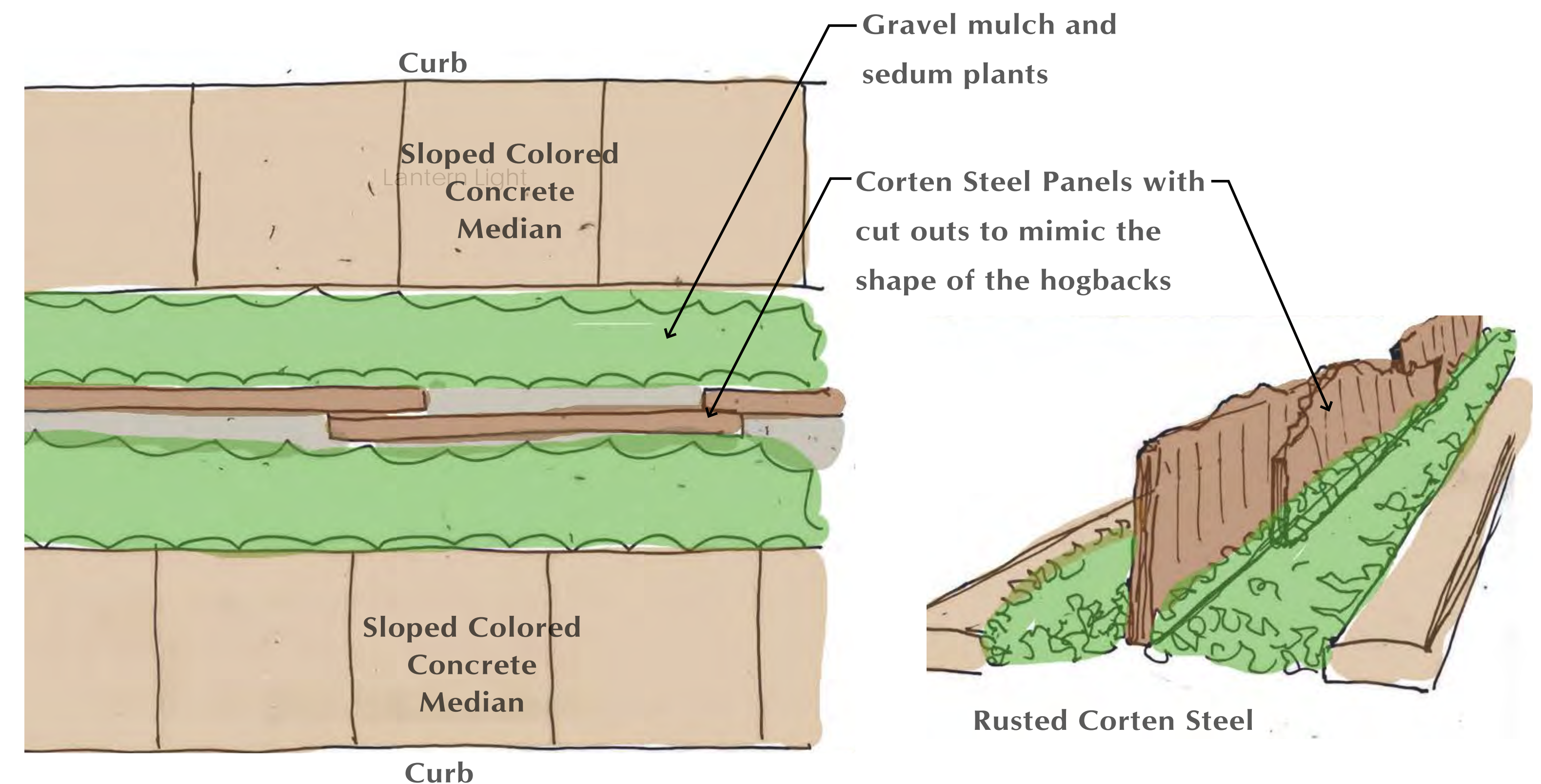


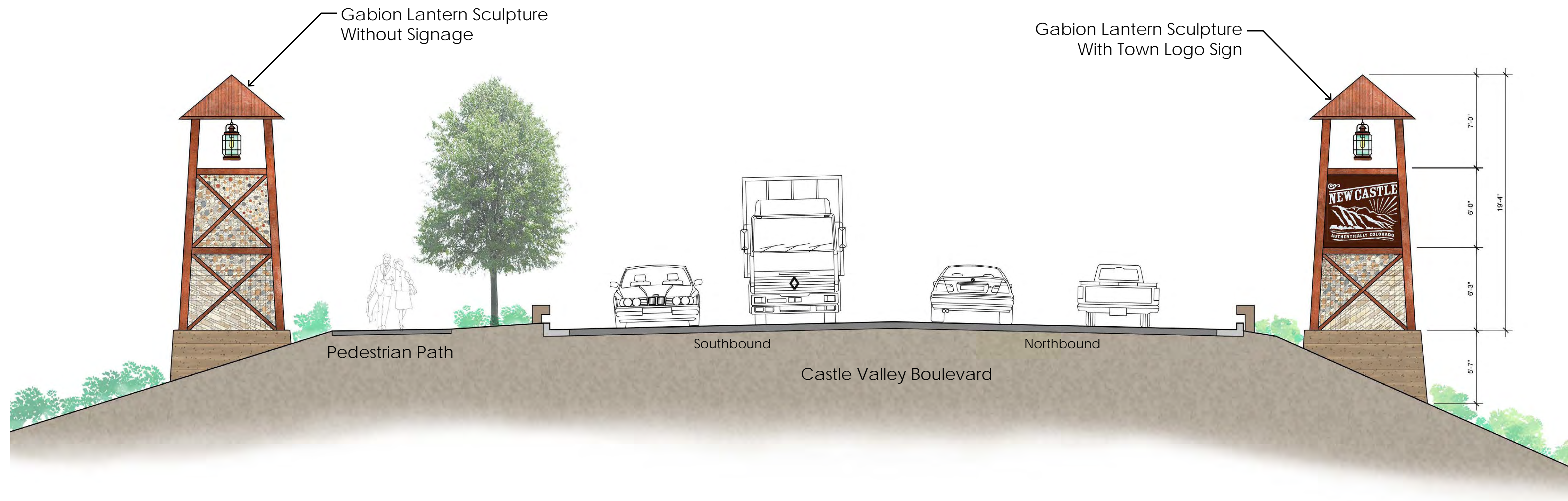
Design Intent

- The median Hogback sculpture is a long linear feature that is meant to link the design together from east and west by creating an identifiable feature on either side of the roundabout intersection and creating a build-up to the main feature of The Grand Hogback at the center of the roundabout.

Alternative Median Hogback Sculpture Concept

- This concept utilizes Corten Steel panels with cut outs to mimic the shape of the Grand Hogback as an alternative to stone.

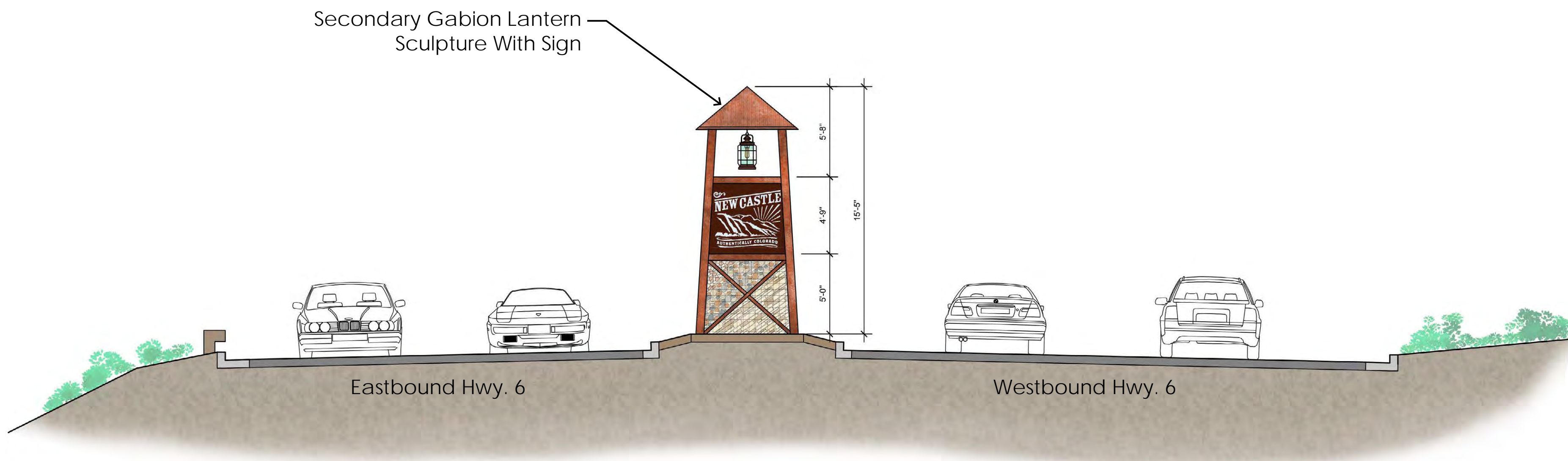




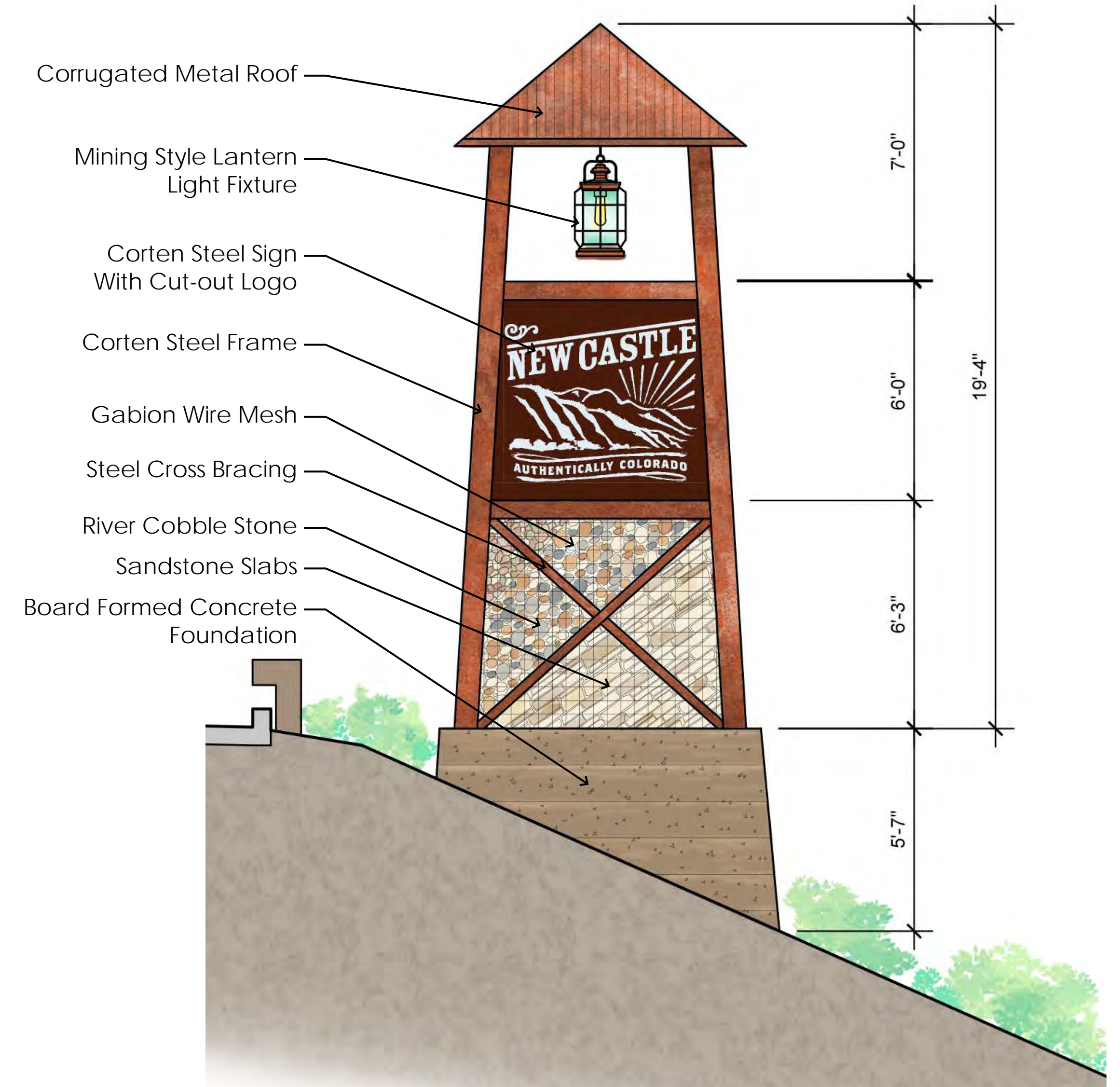
Town Entry Gateway Elevation
(Entering from I-70)

Design Intent

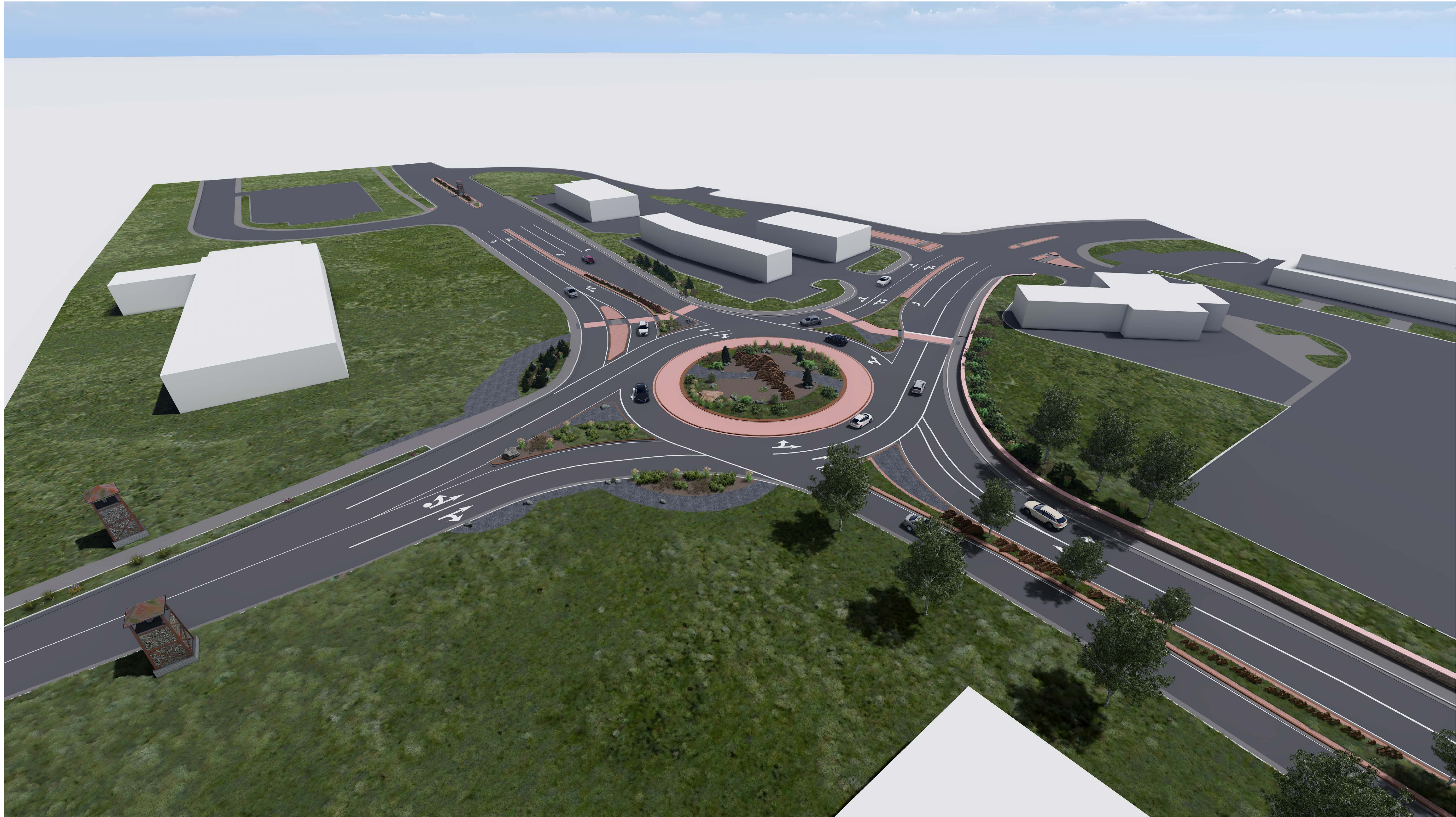
- The driving concept behind the lantern monuments is to create an identifiable and welcoming entry to town.
- The lantern hanging in the top of the structures are intended to light the way home for residents returning to town after work.
- The materials utilized in the construction of the entry monuments are intended to reflect a mining aesthetic by utilizing raw steel and cross bracing that will have a rusty finish when fully weathered.
- The gabion elements would be filled with varying native stone and cobble to reflect the geology of the area.
- The stone layers would be placed at an angle to represent the incline in the strata of the Grand Hogback, with larger sandstone slabs are depicting the back slope of the hogback.
- Smaller rocks and cobble are intended to represent for the eroded strata of the hogback and the river bed.
- A smaller scale Gabion Lantern Sculpture will be placed in the western most median to draw people towards downtown New Castle.



Secondary Entry Sign at Western Median Strip
(Intended to Serve as a Gateway to Downtown New Castle)



Main Entry Sign Elevation - Enlargement



NEW CASTLE GATEWAY ROUNDABOUT



NEW CASTLE GATEWAY ROUNDABOUT



NEW CASTLE GATEWAY ROUNDABOUT



